

gentle river

**Senior Project submitted to**

**The Division of Arts**

**of Bard College**

**by**

**Harrison Edington**

**Annandale-on-Hudson, New York**

**May 2024**

In March 2023 I took a photo of my friend Violet's room. I left this image untouched until August later that year, when I realized the interaction between light, detail, and color expressed a profound level of intimacy. This became a thread and foundation for my project, gentle river. Looking to my previous work I found that light and color act as a way to reveal queer expressions and multiplicity. To which the process took form, as an expression of this multiplicity, I began thinking of how the environment influences this process, and the ways light interacts with or emerges from the body. Acting as a force of revelation rather than obstruction, Nan Goldin's usage of color and Lola Flash's extreme worlds of light acted as influences. I began to think about ways light can embody these themes and reveal the multiplicity we hold.

Through these photographs I focus on the weight of emotion through color as a means of having dramatic yet soft moments that cascade and layer, creating a grounded yet still energized expression and presence. These processes are also affected by how I myself perceive light and color, as well as my interaction within the photos both present and past.

The people in my photographs are like family to me. Because of the close relationships I have with the people in my work we are able to express ourselves free of the burdens placed on us by society. I project myself onto these photos through both my process and interactions within the photos.

I began creating Inverts, portraits with inverted and manipulated colors, as a way to introduce fantasy and world building within the work. I work to establish an environment when photographing that allows people to feel at ease and able to reveal their inner selves without pressure. They are the most energized and stripped back versions of themselves. By taking the term 'Invert' which has been a derogatory phrase applied to queer people and utilizing it as a means of reclamation, the photos remove all pre existing notions of reality, revealing beauty and complexity within.



gentle river showing 5/19 - 5/26

harrison edington's senior show



opening reception 5/21, 7 - 9pm

woods studio:  
23 woods ave, annandale-on-hudson, ny



g  
e  
n  
t  
l  
e  
  
r  
i  
v  
e  
r

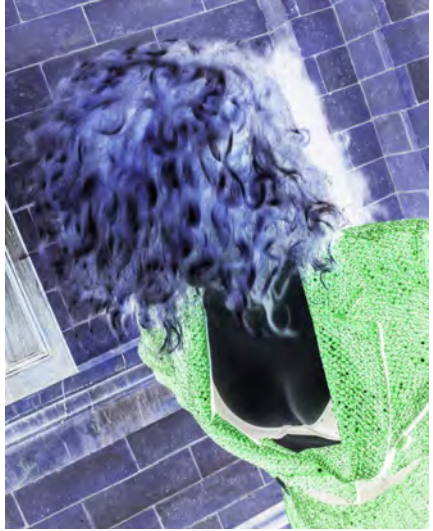


gentle  
river

By: harrison edington



























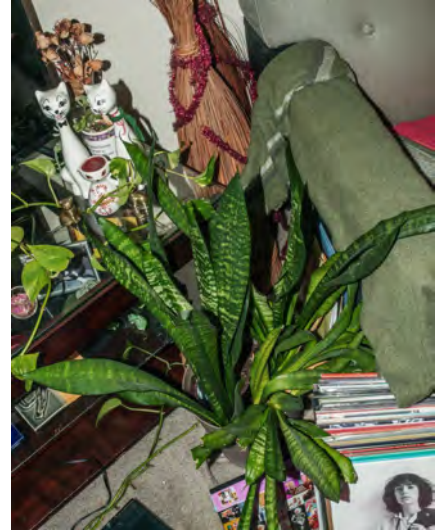




















## dedications:

this book is dedicated to my mother, for always being there to support me and for working so hard my whole life, teaching me stillness and helping me to start photography in the first place.

this book is also dedicated to my father for always taking me out to random places, encouraging me to observe and always encouraging me in my work.

## acknowledgments:

jace, for always being the best roommate, pushing me to work, and for always helping me to challenge myself.

ben , for being my constant collaborator, and an inspiration artistically.

violet, for such a stable presence in my life, and for being so encouraging of my ideas and work.

bryson, for helping me through all the hair-pulling stress, and pushing me to make my best work.

thank you.

## artist statement:

In March 2023 I took a photo of my friend Violet's room. I left this image untouched until August later that year, when I realized the interaction between light, detail, and color expressed a profound level of intimacy. This became a thread and foundation for my project, gentle river. Looking to my previous work I found that light and color act as a way to reveal queer expressions and multiplicity. To which the process took form, as an expression of this multiplicity, I began thinking of how the environment influences this process, and the ways light interacts with or emerges from the body. Acting as a force of revelation rather than obstruction, Nan Goldin's usage of color and Lola Flash's extreme worlds of light acted as influences. I began to think about ways light can embody these themes and reveal the multiplicity we hold.

Through these photographs I focus on the weight of emotion through color as a means of having dramatic yet soft moments that cascade and layer, creating a grounded yet still energized expression and presence. These processes are also affected by how I myself perceive light and color, as well as my interaction within the photos both present and past.

The people in my photographs are like family to me. Because of the close relationships I have with the people in my work we are able to express ourselves free of the burdens placed on us by society. I project myself onto these photos through both my process and interactions within the photos.

I began creating Inverts, portraits with inverted and manipulated colors, as a way to introduce fantasy and world building within the work. I work to establish an environment when photographing that allows people to feel at ease and able to reveal their inner selves without pressure. They are the most energized and stripped back versions of themselves. By taking the term 'Invert' which has been a derogatory phrase applied to queer people and utilizing it as a means of reclamation, the photos remove all pre existing notions of reality, revealing beauty and complexity within.

**gentle**

**river**

all photographs taken in annandale-on-hudson (ny), new york  
(ny) and portland (or)

photography, shot, edited, and designed by harrison edington

may 2024, printed in the united states

hardcover edition: limited series (1/??)

© 2024 harrison edington

instagram: harrisonedington