
Senior Projects Spring 2017

Bard Undergraduate Senior Projects

Spring 2017

(d i s e m) b o d y

Jessica Leigh
Bard College, jl4348@bard.edu

Follow this and additional works at: https://digitalcommons.bard.edu/senproj_s2017

 Part of the [Painting Commons](#)



This work is licensed under a [Creative Commons Attribution-NonCommercial-No Derivative Works 4.0 License](#).

Recommended Citation

Leigh, Jessica, "(d i s e m) b o d y" (2017). *Senior Projects Spring 2017*. 396.
https://digitalcommons.bard.edu/senproj_s2017/396

This Open Access work is protected by copyright and/or related rights. It has been provided to you by Bard College's Stevenson Library with permission from the rights-holder(s). You are free to use this work in any way that is permitted by the copyright and related rights. For other uses you need to obtain permission from the rights-holder(s) directly, unless additional rights are indicated by a Creative Commons license in the record and/or on the work itself. For more information, please contact digitalcommons@bard.edu.

(d i s e m) b o d y

jessica leigh

body *n.* the physical structure of a person or an animal, including the bones, flesh, and organs *v.* to give material form to something abstract

embody *v.* to be an expression of or give a tangible or visible form to (an idea, quality, or feeling)

disembody *v.* to separate or free (something) from its concrete form

related words

person

flesh

creature

specimen

gaze

observe

perceive

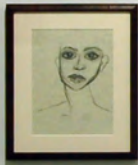
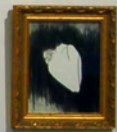
image

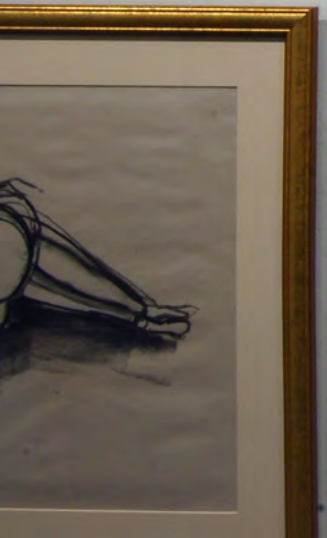
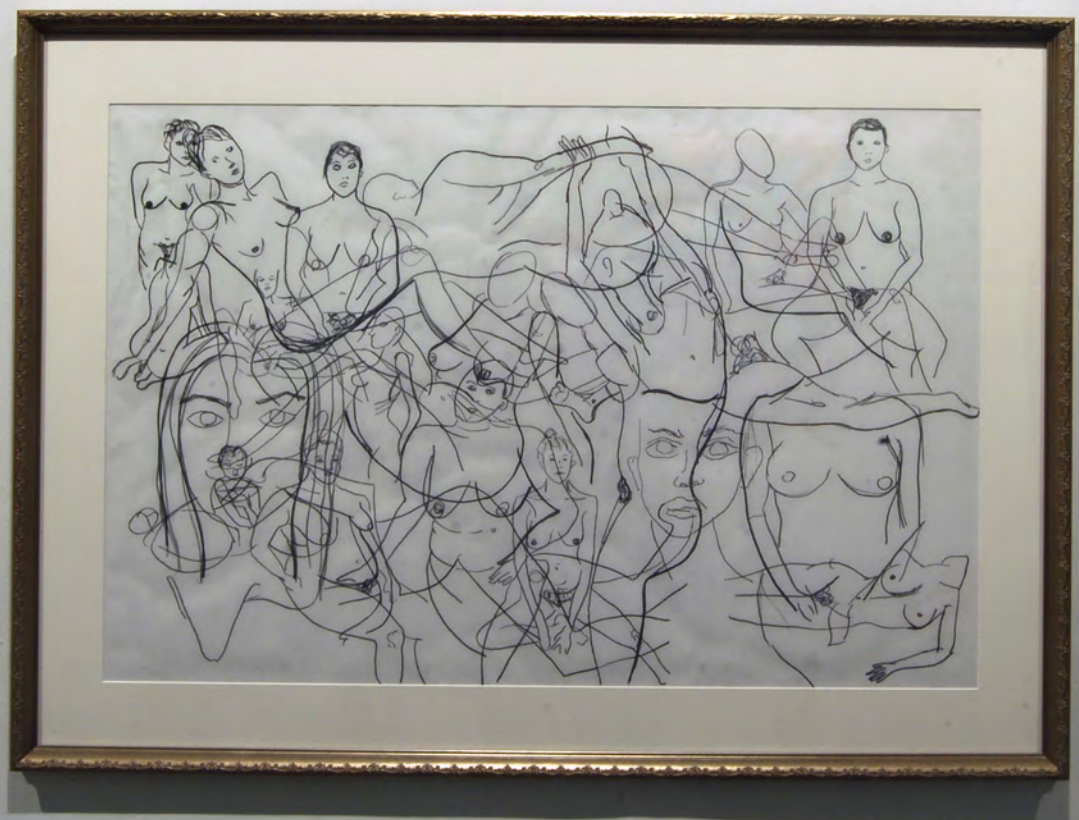
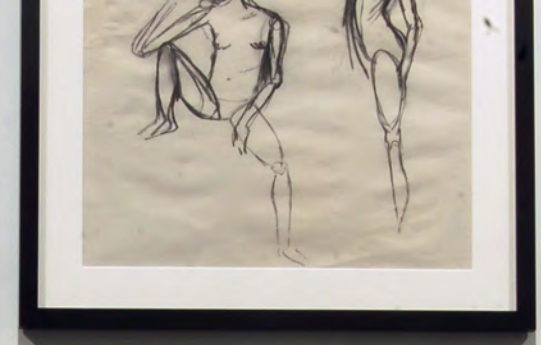
projection

manifestation

objectify

symbolize





(disem)body
jessica leigh



EXIT



